

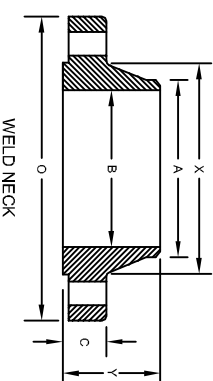
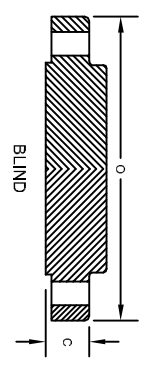
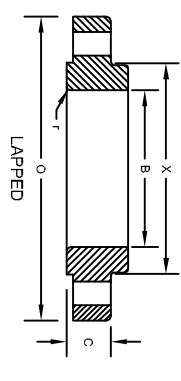
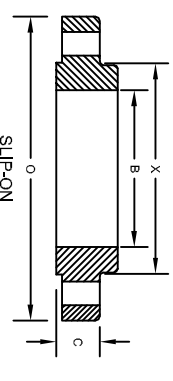
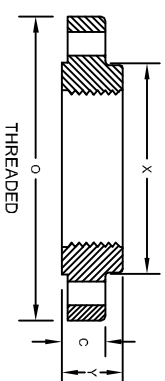
MID-STATES MECHANICAL SERVICES, INC.

55121 211th Lane
Mankato, MN, 56001
800-950-0279
Ph. 507-388-1572
Fax. 507-388-6661

102 Saginaw Road
Joplin, MO, 64801
877-881-6611
Ph. 417-781-6611
Fax. 417-781-6612

150# CLASS FLANGES

NOMINAL PIPE SIZE	O O.D. of Flange	C Min. Thickness of Flange	X Diameter of Hub	A Dia. of Weld Neck	Y Threaded Slip-on	Y Lapped	Y Weld Neck	T Thread Length Minimum	B Slip-on Minimum	B Lapped Minimum	B Weld Neck I.D.	r Lapped Flange Radius
1/2"	3.50"	0.44"	1.19"	0.84"	0.62"	0.62"	1.88"	0.62"	0.88"	0.90"	0.62"	0.12"
3/4"	3.88"	0.50"	1.50"	1.05"	0.62"	0.62"	2.06"	0.62"	1.09"	1.11"	0.82"	0.12"
1"	4.25"	0.56"	1.94"	1.32"	0.69"	0.69"	2.19"	0.69"	1.36"	1.38"	1.05"	0.12"
1-1/4"	4.62"	0.62"	2.31"	1.66"	0.81"	0.81"	2.25"	0.81"	1.70"	1.72"	1.38"	0.19"
1-1/2"	5.00"	0.69"	2.56"	1.90"	0.88"	0.88"	2.44"	0.88"	1.95"	1.97"	1.61"	0.25"
2"	6.00"	0.75"	2.38"	2.38"	1.00"	1.00"	2.50"	1.00"	2.44"	2.46"	2.07"	0.31"
2-1/2"	7.00"	0.88"	2.88"	2.88"	1.12"	1.12"	2.75"	1.12"	2.94"	2.97"	2.47"	0.31"
3"	7.50"	0.94"	4.25"	3.50"	1.19"	1.19"	2.75"	1.19"	3.57"	3.60"	3.07"	0.38"
3-1/2"	8.50"	0.94"	4.81"	4.00"	1.25"	1.25"	2.81"	1.25"	4.07"	4.10"	3.55"	0.38"
4"	9.00"	0.94"	5.31"	4.50"	1.31"	1.31"	3.00"	1.31"	4.57"	4.60"	4.03"	0.44"
5"	10.00"	0.94"	6.44"	5.56"	1.44"	1.44"	3.50"	1.44"	5.66"	5.69"	5.05"	0.44"
6"	11.00"	1.00"	7.56"	6.63"	1.56"	1.56"	3.50"	1.56"	6.72"	6.75"	6.07"	0.50"
8"	13.50"	1.12"	9.69"	8.63"	1.75"	1.75"	4.00"	1.75"	8.72"	8.75"	7.98"	0.50"
10"	16.00"	1.19"	12.00"	10.75"	1.94"	1.94"	4.00"	1.94"	10.88"	10.92"	10.02"	0.50"
12"	19.00"	1.25"	14.38"	12.75"	2.19"	2.19"	4.50"	2.19"	12.88"	12.92"	12.00"	0.50"
14"	21.00"	1.38"	15.75"	14.00"	2.25"	3.12"	5.00"	3.12"	14.14"	14.14"		0.50"
16"	23.50"	1.44"	18.00"	16.00"	2.50"	3.44"	5.00"	3.44"	16.16"	16.16"		0.50"
18"	25.00"	1.56"	19.88"	18.00"	2.69"	3.81"	5.50"	3.81"	18.18"	18.18"		0.50"
20"	27.50"	1.69"	22.00"	20.00"	2.88"	4.06"	5.69"	4.06"	20.20"	20.20"		0.50"
24"	32.00"	1.88"	26.12"	24.00"	3.25"	4.38"	6.00"	4.38"	24.25"	24.25"		0.50"



150# CLASS FLANGE BOLTING

NOMINAL PIPE SIZE	Bolt Circle Diameter	Bolt Hole Diameter	Number of Bolts	Bolt Diameter	Machine Bolts 1/16" R.F.	Stud Bolts 1/16" R.F.	RING GASKETS		FULL FACE GASKETS		NOMINAL PIPE SIZE	
							O.D.	I.D.	O.D.	I.D.		Number of Bolt Holes
1/2"	2-3/8"	5/8"	4	1/2"	2"	2-1/2"	1-7/8"	27/32"	3-1/2"	27/32"	4	1/2"
3/4"	2-3/4"	5/8"	4	1/2"	2-1/4"	2-1/2"	2-1/4"	1-11/16"	3-7/8"	1-11/16"	4	3/4"
1"	3-1/8"	5/8"	4	1/2"	2-1/4"	2-3/4"	2-5/8"	1-5/16"	4-1/4"	1-5/16"	4	1"
1-1/4"	3-1/2"	5/8"	4	1/2"	2-1/2"	2-3/4"	3"	1-21/32"	4-5/8"	1-21/32"	4	1-1/4"
1-1/2"	3-7/8"	5/8"	4	1/2"	2-1/2"	3"	3-3/8"	1-29/32"	5"	1-29/32"	4	1-1/2"
2"	4-3/4"	3/4"	4	5/8"	2-3/4"	3-1/4"	4-1/8"	2-3/8"	6"	2-3/8"	4	2"
2-1/2"	5-1/2"	3/4"	4	5/8"	3"	3-1/2"	4-7/8"	2-7/8"	7"	2-7/8"	4	2-1/2"
3"	6"	3/4"	4	5/8"	3-1/4"	3-3/4"	5-3/8"	3-1/2"	7-1/2"	3-1/2"	4	3"
3-1/2"	7"	3/4"	8	5/8"	3-1/4"	3-3/4"	6-3/8"	4"	8-1/2"	4"	8	3-1/2"
4"	7-1/2"	3/4"	8	5/8"	3-1/4"	3-3/4"	6-7/8"	4-1/2"	9"	4-1/2"	8	4"
5"	8-1/2"	7/8"	8	3/4"	3-1/4"	4"	7-3/4"	5-9/16"	10"	5-9/16"	8	5"
6"	9-1/2"	7/8"	8	3/4"	3-1/2"	4"	8-3/4"	6-5/8"	11"	6-5/8"	8	6"
8"	11-3/4"	7/8"	8	3/4"	3-3/4"	4-1/4"	11"	8-5/8"	12-1/2"	8-5/8"	8	8"
10"	14-1/4"	1"	12	7/8"	4"	4-3/4"	13-3/8"	10-3/4"	16"	10-3/4"	12	10"
12"	17"	1"	12	7/8"	4-1/4"	4-3/4"	16-1/8"	12-3/4"	19"	12-3/4"	12	12"
14"	18-3/4"	1-1/8"	12	1"	4-1/2"	5-1/4"	17-3/4"	14"	21"	14"	12	14"
16"	21-1/4"	1-1/8"	16	1"	4-3/4"	5-1/2"	20-1/4"	16"	23-1/2"	16"	16	16"
18"	22-3/4"	1-1/4"	16	1-1/8"	5"	6"	21-5/8"	18"	25"	18"	16	18"
20"	25"	1-1/4"	20	1-1/8"	5-1/2"	6-1/4"	23-3/8"	20"	27-1/2"	20"	20	20"
24"	29-1/2"	1-3/8"	20	1-1/4"	6"	7"	28-1/4"	24"	32"	24"	20	24"

